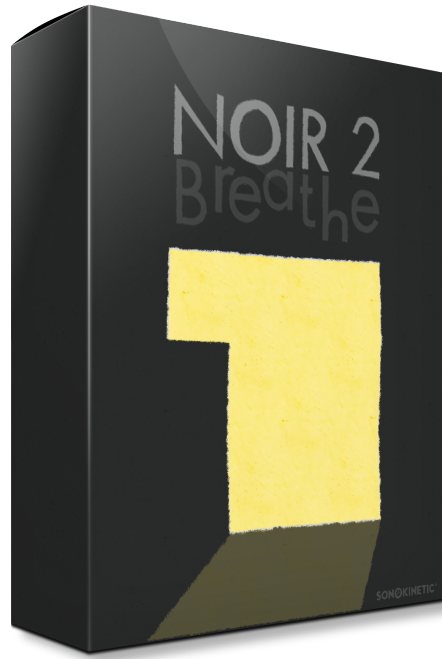


NOIR 2

Breathe





## **Noir 2 - Breathe**

**Aspiration = Inspiration**

Sonokinetic BV © 2024

---

## TABLE OF CONTENTS

Table Of Contents	3
Content	5
Quick Start Guide	6
Interface	7
Preset Fields	8
Picking Phrases	8
Randomize / locking	9
Quick Selection	9
Variations	10
Purging	11
Mod Wheel	11
Speed Control	11
Score View	11
Drag Midi	12
Harmonic Shift	13
Microphone Mixing	13
Playback Offset	14
Sample Crossfade	14
Panning	14
Volume	15
Release Volume	15
Phrase Continue / Retrigger	17
Bar Sync	17
Native Instruments & Komplete Kontrol	18
Managing CPU And RAM	18
Tips And Tricks	19

---

# NOIR 2 - BREATHE

## Aspiration = Inspiration

The original [Noir](#) is one of our most popular products, with its ability to transport you to the days of early Hollywood, or the iconic jazz film music of the 60s and 70s. The vibe is simply breathtaking.

For this first sequel to Noir we are focusing on Brass and Woodwinds material, with a plethora of languid and melancholic takes. Don't expect stereotypical muted trumpet stuff here - in fact, we didn't record any trumpets at all. Instead, you'll find a warm, sultry collection of Clarinets, French Horns, Trombones and Flutes. These phrases are lush and alluring, adapting to any style of scoring. They are composed specifically to blend into the background and add that Sonokinetic touch of realism and colour that you have come to expect from us.

Whether you're composing for film, television, video games, or anything really, Noir 2 - Breathe is an invaluable palette of inspiring performances, ripe for exploration.

Phrase performance variations, originally introduced in [Fantasy](#), have been carried over into Noir 2 - Breathe. We recorded variations that can be triggered by keyswitches. With a single keypress, you can substitute a currently playing phrase with an inspirational variation on the fly... after which the engine will automatically revert back to the original phrase. The advantage of this is you can disrupt the usual call & response playback and loop phrases at their less recognisable points, introducing variations when you feel like it.

Also carried over from Fantasy / Indie 2 are the enhanced microphone mixing options. Soundstaging now has a dedicated interface page with the ability to combine all 4 microphone positions to create an optimal audio environment. Match the ambience of almost any other orchestral library with ease.

We, at Sonokinetic BV, are very proud to introduce Noir 2 - Breathe and can't wait to hear the amazing things you, our valued customer base, will produce with it.

Sonokinetic has established a name as one of the best value & quality sample producers and with this product we'd like to underline that statement. We stick with our unbeatable pricing module and high quality sampling.

We wish you the best inspiration and creativity.

With warm regards,

The Sonokinetic Noir 2 - Breathe Production Team

---

# CONTENT

6000+ samples (6 GB sample content) in 24 bit 44.1 kHz NCW format

One patch for Kontakt Player 7.10 : compatible with Komplete Kontrol and NKS(2)

2 recorded orchestral sections

- Woodwinds (2 Flutes - 2 Clarinets - Bass Clarinet)
- Brass (4 French Horns, 2 Trombones, 1 Bass Trombone)

4 recorded microphone positions - fully mixable

- Close
- Decca tree
- Wide
- Balcony (Far)

Individual phrase controls include

- Volume (with separate release volume)
- Pan
- Tempo sync double / half / ITM
- Mod Wheel on / off
- Bar Sync
- Phrase Continue / Retrigger

Custom-designed interface with score display and MIDI drag & drop

Time Machine Pro capability

Variation hot keys

Purging system

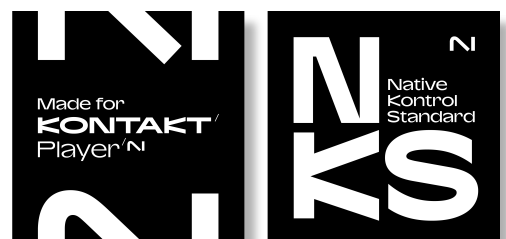
Randomization - whole instrument

Native Instruments Kontakt Player Library license

Royalty and copyright free content license

Noir 2 - Breathe Reference document (PDF)

Artwork: "Noir 2 - Breathe" DVD cover. Designed by Sonokinetic BV



# QUICK START GUIDE

Play chords in the blue key range in major and minor triads.

Load the Noir 2 - Breathe instrument into Kontakt and trigger phrases in the orange key range.

Click the info button at the bottom left of the interface to overlay an explanation of the basic functions - shown below.

- use the octave from middle C (C3) to trigger phrases  
 - play chords in the blue key area E0 to B2 to change key  
 - if a phrase has a variation a yellow key will show 1 octave higher

randomise the instrument by clicking the 'O' in the title

- 1.purge this preset to free up RAM
- 2.whether the mod wheel controls volume
- 3.phrase tempo settings
- 4.turn harmonic shift on/off for this phrase
- 5.display score

Individual Phrase Control Buttons

click this phrase graphic to manually pick a different phrase

- next phrase in this category
- randomise this preset only
- previous phrase in this category

Individual Phrase Control Knobs

- phrase offset - up to three 8th notes each way
- adjust x-fade to smoothen transitions
- change pan for this phrase
- adjust phrase volume
- control release volume independently
- click line to link/unlink release sample volume

adjust the mix here drag all the way down to purge a mic from RAM

click in an inactive field or play the designated key-switch (from key C3) to activate and/or play it

# NOIR 2 - BREATHE FUNCTIONS

## INTERFACE

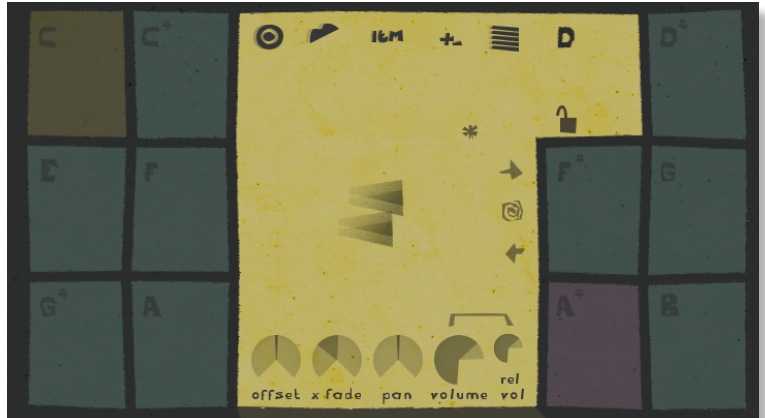
Below is the main interface for Noir 2 - Breathe. This particular screenshot is showing the phrase assigned to the F key of the 12 available preset fields. Each of them operates in the same way with options for choosing phrases, mod wheel control, tempo, score view, harmonic shift, offset, X-fade, panning and volume.



## PRESET FIELDS

Noir 2 - Breathe has 12 preset keys that can be used to trigger phrases and these relate to 12 fields of the interface shown here.

You can play the phrases by playing keys from **MIDI C3-B3**. These are also tempo synced to your host DAW BPM. As you play each phrase the main interface graphic will change to display that phrase and preset field.



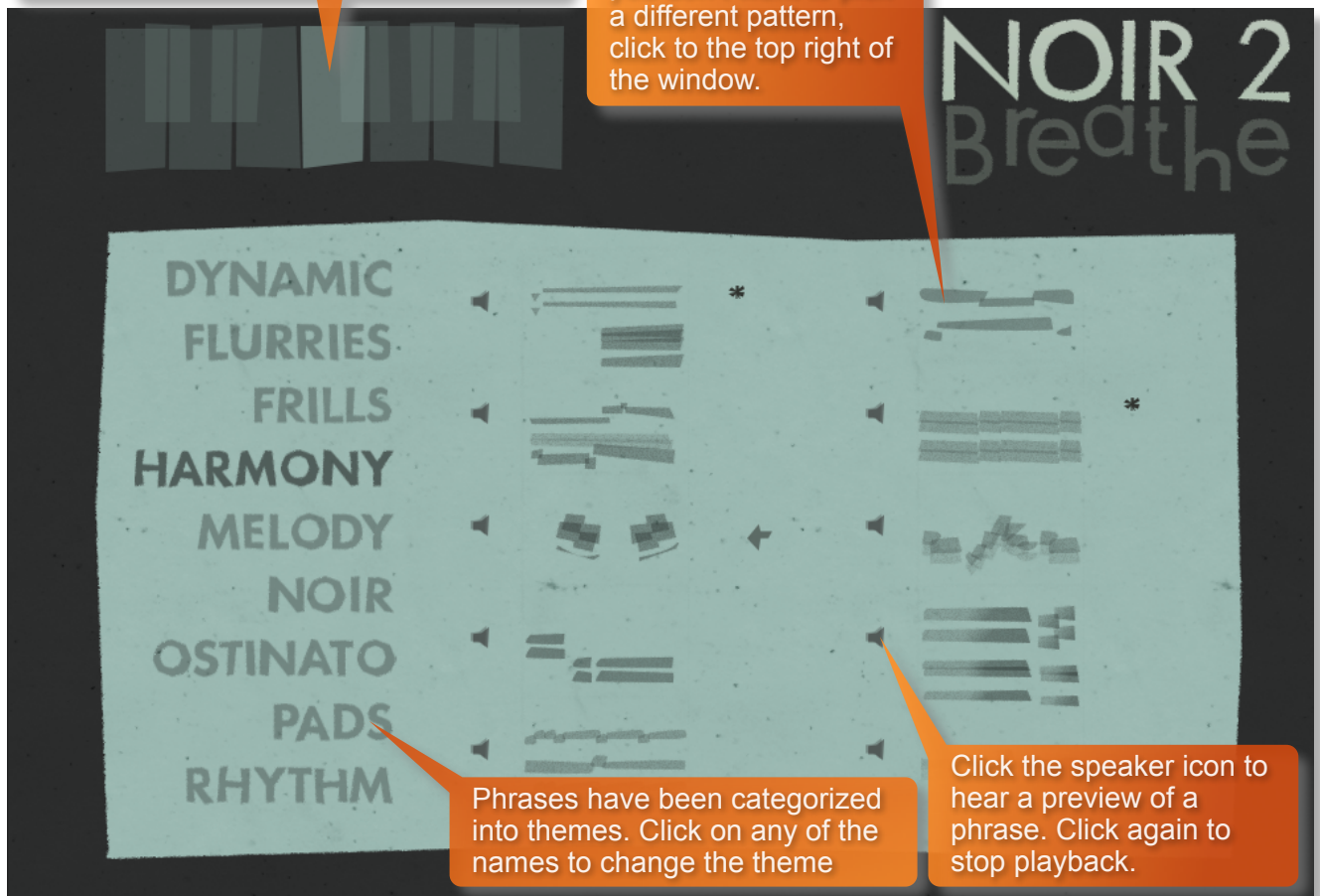
## PICKING PHRASES

Choose a phrase by clicking the graphic notation representing the performance. The phrase picker window will then open.



Select which of the 12 presets you are editing by clicking here or playing a preset key

Choose a pattern here. To exit this window choose a phrase or, if you don't want to pick a different pattern, click to the top right of the window.



Phrases have been categorized into themes. Click on any of the names to change the theme

Click the speaker icon to hear a preview of a phrase. Click again to stop playback.



## RANDOMIZE / LOCKING

Click on the O of NOIR 2 to randomize the phrases of the unlocked preset fields... useful if you're stuck for ideas.



Randomize just one field by clicking this icon.



If you want to retain a preset field's phrase whilst randomizing the others, just click the padlock icon to "lock" that field. Click it again to unlock.



## QUICK SELECTION



A quick way to navigate through all the phrases in a theme is via these 3 icons in each field:

The circular centre icon will randomize a field, clicking this icon will choose any phrase.

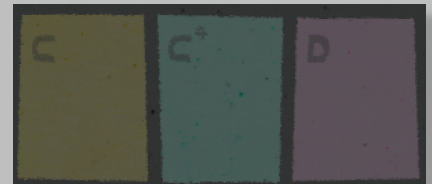
The left and right arrows will move through the available phrases in a selected theme (woven / acrylic / threads etc). This is a great way to find complementary phrases that work well together.

It's worth noting that the colours of the phrase selections change depending on the material that's been recorded. With this colour coding, you can see at-a-glance which instruments will be playing for any given phrase / field.

**Yellow** = brass only

**Blue** = woodwinds only

**Pink** = brass & woodwind combo



## VARIATIONS

For Noir 2 - Breathe, we have recorded 1 bar variations for many of the phrases. These variations provide interesting new twists on a motif or performance. The variations cannot be chosen from the phrase picker, but are automatically pre-loaded onto an octave of hot keys from **MIDI C4-B4**. If a variation is available for a phrase, a \* icon will be shown in the preset field.



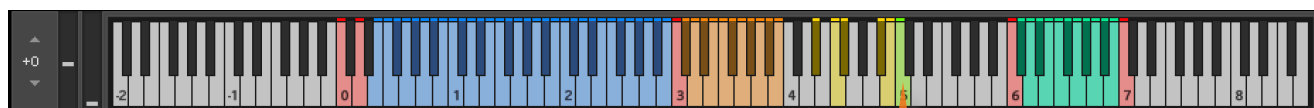
Experiment with playing phrases and then press a variation hot key. The triggering of the variation will be played at the correct place in the bar, with a smooth transition. The regular phrase will continue after the variation is played, with the meter intact.

You can see the variations in the last bar of the score view, and the variation MIDI can be exported in the normal way - just look for the notation in the bar 3 of a 4-bar performance.

3 bars of regular phrasing which will play back in a loop.

1 bar of variation notation, different to the other 3 bars.

To trigger all available variations simultaneously for all currently playing phrases, press the green hot key at **C5**. This will engage all variations at the next available point in the bar.



Trigger all available variations for all currently playing phrases.

---

## PURGING



You can purge the samples from an individual preset field with this icon - and click again to reload. Use this function to free up system RAM.

Hold cmd / control and left-click to load (unpurge) the current field and purge all others that are not currently locked.

Hold shift and left-click to load (unpurge) all fields.

---

## MOD WHEEL



By default the MOD wheel of your MIDI keyboard will control the output volume of all preset fields. However, it's possible to disable MOD wheel control for one or more fields. This allows greater expression as you can keep the volume of one or more phrases constant whilst changing others with the MOD wheel. Use this to create interesting, constantly changing phrases and crescendos / decrescendos. Click this icon in each preset field to toggle MOD wheel control on / off.

---

## SPEED CONTROL



Phrases in Noir 2 - Breathe have been recorded at 75 BPM and will sync to your host DAW tempo by default, being time-stretched within Kontakt to match the BPM. However, it is possible to switch all phrases into half / double time. Click the **ITM** icon to change the playback speed of the phrase, relative to your DAW's BPM.

**1X** : Original recorded speed, relative to DAW BPM

**2X** : Playback at 2 x speed, relative to DAW BPM

**1/2 X** : Playback at ½ speed, relative to DAW BPM

**ITM** : Automatic - "Intelligent Tempo Mapping" - Playback at recorded speed, but at automatic half / double time at extreme tempi. This is generally the best speed setting. However, if your project has a tempo change mid-phrase, you may find that an alternative speed setting may be more useful. Also, when you are doing gradual tempo changes across a large range, it might be a good idea to opt for one of the fixed values instead of ITM.

---

## SCORE VIEW

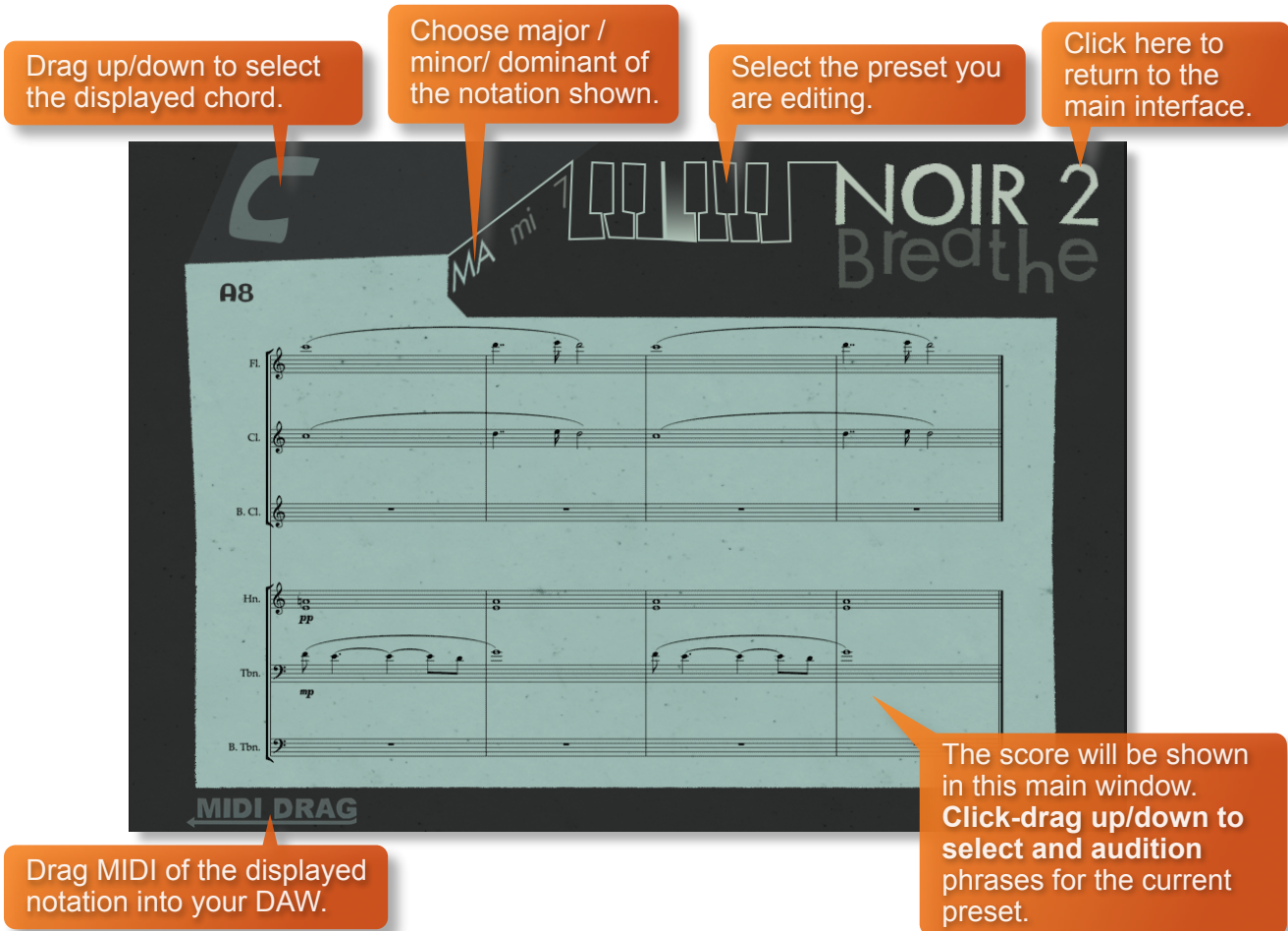


The phrases in Noir 2 - Breathe are represented by graphics instead of actual notations. However, clicking on the score icon shown here will access the original notation. This will open a large Score View, where you can view the currently selected phrase in notated form.

From this window you can directly access the score for your currently selected preset field and see the major and minor versions of it in all 12 root keys.

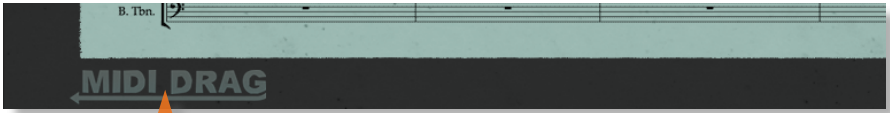
You can see phrase variations in the final bar of the score view. Just look for the notation in bar 3 of a 4-bar performance.

**NEW: You can now also select phrases by dragging up down on the score, and select which preset you're changing by using the keyboard on the score page.**



## DRAG MIDI

The Noir 2 - Breathe interface features a **DRAG MIDI** button in the score view window. Click the **MIDI DRAG** legend, hold and drag into your DAW to paste the MIDI information from the Noir 2 - Breathe score straight into tracks of your DAW.



...Choose notation using the Score View, then click and drag MIDI into a track in your DAW to transfer the MIDI notation data.

One or more MIDI tracks will be created in your DAW which correlate(s) with the number of staves shown in the score view for that particular phrase. You can then assign your own virtual instruments to these tracks and edit the MIDI data in the normal way.

We've developed this to be a real time-saver when you need access to the MIDI data of Noir 2 - Breathe outside of the instrument itself. Drag MIDI is useful for several things and gives you ultimate flexibility over the notation of the phrases within Noir 2 - Breathe. For example, for doubling instruments, transposing or more complex editing. Drag MIDI also allows a quick and easy way for orchestrators to transfer Noir 2 - Breathe's phrases to a score prepared for live players.

Please note that the MIDI is derived from the original score that the musicians performed, not from the performance itself. Therefore the MIDI will not reflect the nuances of play, and you may have to adjust it manually to get a perfect match with the played performance when doubling it with external instruments. Also note that the MIDI dragged cannot be used as an input for Noir 2 - Breathe, you'll need other virtual instruments on different tracks in your DAW to play the dragged and dropped MIDI files.

## HARMONIC SHIFT



The Harmonic Shift function allows the user to play phrases simultaneously in different, but related, keys. This function can be used to access even more complex chord combinations and harmonies when phrases are played together.

Harmonic Shift can be turned on or off for each preset field with the +/- button but it's most useful if you turn it on for some preset fields and off in others.



The keyswitches from **C6-B6** control the shift-interval of the shifted phrase. The base shifted key is shown at the bottom right of the interface, when Harmonic Shift is active.

You should note that Harmonic Shift **only** designates an interval, relative to C. For example, playing an Em chord and then using the Harmonic Shift keyswitch at D# (an interval of a **third**) would add a minor **third** up from Em. This would result in a G major phrase being added. By default we have chosen a relative major or minor for each interval, which we deem most useful.

The effectiveness and musicality of the Harmonic Shift varies, depending on the phrases you assign to each field and the harmonic shift intervals that you play. Experiment with different phrases and settings to create interesting and surprising textures and note combinations.

## MICROPHONE MIXING

The samples for Noir 2 - Breathe have been recorded in the same hall as many other Sonokinetic orchestral libraries.

Noir 2 - Breathe has options for microphone mixing that make it possible to mix all 4 mic positions; Close, Decca Tree, Wide and Far (balcony).

- Activate and deactivate microphone positions by clicking on the microphone position name.
- Mixing levels are controlled by dragging the faders.
- Microphone mixing options are **global** and apply to the entire instance of Noir 2 - Breathe including all phrases and fields. Note that activating multiple microphone sections puts additional strain on CPU usage.
- If you plan on using just one microphone position, set the other fader positions to their minimum values or click the bottom legends to deactivate and conserve CPU and RAM.



# PHRASE OPTIONS

Each of the preset fields has dials to adjust the playback of its assigned phrase. Here you can adjust sample offset, X-fade, panning, volume and release volume.



You can left-click any dial whilst holding cmd / control to reset it to default. More information on each of the options below:

## PLAYBACK OFFSET

Use the **OFFSET** dial at the bottom of the preset field interface to change the sample start point of a preset field, up to three 8th notes each way.

Note that when you double or halve the tempo of a phrase, the offset value will stay relative to the host tempo, so relative to the phrase content tempo these values will change. e.g. when the tempo button is set to 2x the offset value is doubled.

You can use the sample offset function subtly, for very minor adjustments, to tighten up the timing of phrases relative to one another.

You can also use the function to make more dramatic timing changes by offsetting one or more preset fields by entire beats, resulting in more complex patterns including polyrhythms and syncopation.



## SAMPLE CROSSFADE

Use the **X-FADE** dial at the bottom of the preset field interface to adjust the crossfade length of one sample into another when you change chords.

Due to the natural human playing that's been sampled and the wide variety of phrases within Noir 2 - Breathe, it may sometimes be necessary to adjust the crossfade of phrases when a new chord is played.

This control will help to smooth out or tighten up transitions when used carefully.



## PANNING

Use the **PAN** dial at the bottom of the preset field interface to adjust the panning of that phrase.



## VOLUME

Use the **VOLUME** dial at the bottom of the preset field interface to adjust the volume of that phrase. By default the volume of both the phrase sample and the release tail sample are locked together (shown here with an unbroken line between the two dials).



## RELEASE VOLUME

Noir 2 - Breathe features release tail samples for all phrases. These give a realistic and appropriate release note or reverb tail when keys are released. The release samples become especially important if you choose to truncate the playback of a phrase, where a realistic end note will be played. The release tail volume of any phrase can be adjusted by using the **RELEASE VOLUME** dial shown here.



You can unlock the release tail sample volume from the phrase samples by clicking the line between them - making it a dashed line.

To turn the release samples off completely just turn the dial all the way anticlockwise.



It's possible to activate / deactivate the release samples for all preset fields simultaneously. Use the key switch at **C7** to do this. Press hard to enable release samples, soft to disable them.

# PLAYING NOIR 2 - BREATHE

The basic method of playing Noir 2 - Breathe is very simple, just press a key in the range **C3** to **B3**.

Depending on what phrase is assigned to that preset field it will trigger a tempo-synced woodwind or brass phrase. Sustain the phrase either by holding the note down or using a sustain pedal. Each playing preset field will also show an animated graphic to the right.

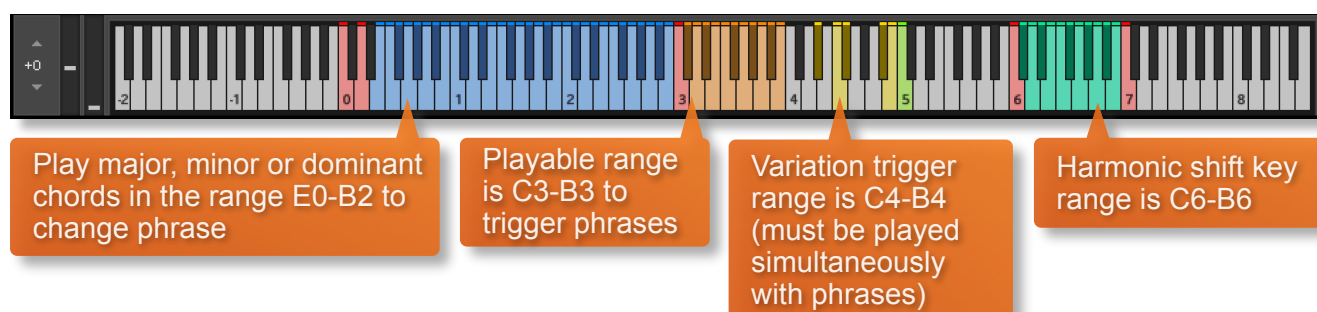
For every new note you press, the phrase will start playback from the beginning, unless you have opted to adjust the **OFFSET** parameter or you have **BAR SYNC / PHRASE CONTINUE** set to on (see below). Phrase playback position is also effected by the **PHRASE LINK** control (see below).

You can play simultaneous phrases by pressing more than one preset field key at a time.

Use the blue key range from **MIDI E0-B2** to play major and minor triad chords. The playing phrase will change in key to match whichever chord you choose.

Keys from **MIDI C6-B6** dictate the harmonic shift interval of one or more preset fields.

Use the yellow key range from **MIDI C4-B4** to switch into playing variations on a phrase, adding interest to the performances. Note that many phrases have variations, but not all. Phrases with a variation available will be shown with a yellow key in the range **C4** to **B4**. Trigger all available variations simultaneously for all currently playing phrases with **C5**.



## Chord fingering

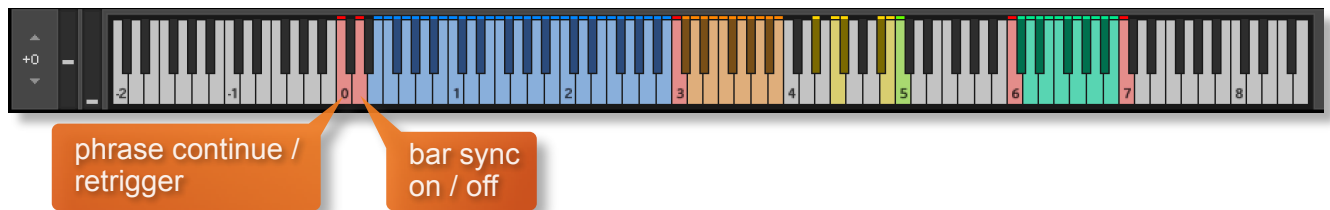
We have designed the chord recognition system within Noir 2 - Breathe to be as simple as possible, but you will still need to play the correct keys to correct chords. The system recognises inversions.

Major triad in C would be	<b>C - E - G</b>	<b>E - G - C</b>	<b>G - C - E</b>
Minor triad in C would be	<b>C - Eb - G</b>	<b>Eb - G - Bb</b>	<b>G - C - Eb</b>
Dominant 7th chord in C	<b>C - E - Bb</b>	<b>E - Bb - C</b>	<b>G - Bb - C</b> <b>Bb - C - E</b>



---

## PHRASE CONTINUE / RETRIGGER



When playing different chords or applying different Harmonic Shift intervals, you have the choice whether to retrigger the phrases or to simply continue the phrase but in the new key. This function is controlled by velocity sensitive key switch **C0**. High velocity (>84) will turn phrase continue on, low velocity (<83) will turn it off.

---

## BAR SYNC

Noir 2 - Breathe can use a 'Bar Sync' option. This is controlled by velocity sensitive keyswitch **D0**. High velocity (>84) will turn it on, low velocity (<83) will turn it off.

This feature works in conjunction with the 'Phrase Continue' function. When switched on, the scripting within Noir 2 - Breathe will read the position of the bar in your host DAW and retain playback of the phrases in line with that bar. For example, if Bar Sync is turned on and you trigger a phrase on the second beat of a bar, the sample will play from its second beat too.

- Note that Bar Sync can only be used in Phrase Continue mode. If Phrase Retrigger is engaged instead, Bar Sync will automatically switch off.
- When Phrase Continue mode is switched on again, Bar Sync will return to whichever setting was being used previously, either on or off.

---

## NATIVE INSTRUMENTS & KOMPELETE KONTROL

Noir 2 - Breathe is designed specifically for Native Instruments Komplete Kontrol keyboards. If you are a user of one of these controller keyboards you can make use of all the niceties that come with the NKS and NKS2 standard, which include:



Key lights on your keyboard showing the corresponding colours of the Noir 2 - Breathe key switches, audio previews and graphical displays. In addition, the rotary controls of your keyboard will be automatically assigned to the most commonly used functions in Noir 2 - Breathe.

There are also some great accessibility features built in that make using the instrument from your NI keyboard that much more intuitive and fun!

---

## MANAGING CPU AND RAM

Noir 2 - Breathe is a large instrument and pushes Kontakt to its limit in terms of size and processing. Therefore, it's useful to know how to limit the memory and processor impact of Noir 2 - Breathe within your own system. Although we've covered some of these aspects already, the following processes will help to conserve RAM and CPU:

- Use the purge function within each preset field to remove the samples from memory
- Use only one microphone position and deactivate the others
- Ensure your Kontakt or DAW's audio buffer size is large enough to prevent artefacts when playing Noir 2 - Breathe.

---

## TIPS AND TRICKS

- Noir 2 - Breathe continues the innovative function of “variations” for many of the phrases, triggered on **MIDI C4-B4**. Make sure to experiment with these performances variations to add interest to your music (see page 10).
- If switching to a variation isn't sounding as smooth as you'd like, adjust the X-fade timing of that phrase, or trigger the variation hot key at a different point in the phrase.
- Don't forget that you can play across all 12 preset fields simultaneously, triggering samples at different times.
- All dials can be set to their default position by holding **cmd / control** whilst left-clicking.
- You can right-click on any dial within Noir 2 - Breathe to assign a MIDI CC controller. This is especially useful for the individual phrase volume dials as it then gives even greater flexibility to mix and change the relative volumes of 12 phrases as they play.
- Noir 2 - Breathe's instant phrase triggering gives lots of options for syncopation and polyrhythms. Try playing two or more phrases simultaneously whilst the **BAR SYNC** control is off.
- Adjust the volume level of the release tail samples, relative to the main part of the phrase. Lower the release level to give phrases subtler releases, raise it for a bolder ending.
- Because Noir 2 - Breathe was recorded with the same microphone positions and in the same hall as other Sonokinetic orchestral libraries, you can mix-and-match them and they should sound extremely cohesive.
- If you're stuck for ideas, click the O in the title of NOIR in the top-right of the interface to randomize the whole instrument.
- Please refer to our online tutorials concerning Noir 2 - Breathe. We offer comprehensive dedicated video tours concerning this instrument at <https://www.youtube.com/sonokinetic>

for more information, check our website:

<https://www.sonokinetic.net/>

follow us on X:

<https://x.com/sonotweet>

interact on Blue Sky:

<https://bsky.app/profile/sonokinetic.bsky.social>

check out our Instagram:

<https://www.instagram.com/sonokinetic/>

browse our TikTok:

<https://www.tiktok.com/@sonokinetic/>

watch our YouTube tutorial videos:

<https://www.youtube.com/@sonokinetic>

access your own user area:

<https://users.sonokinetic.net>

...or if you have any questions about this product  
or any other Sonokinetic product, send us a support query at

<https://support.sonokinetic.net/>

all the creative best,

Sonokinetic BV

**SONOKINETIC®**